

## Short Essay

Figure 1 and Figure 2 show how the list of World Heritage Properties inscribed<sup>1</sup> by the United Nations Educational, Scientific and Cultural Organization (UNESCO) has evolved to date.

The *World Heritage* is divided into three types: *Cultural Heritage*, including those buildings and ruins of remarkable universal value, *Natural Heritage*, including places with geological formations or biodiversity or natural beauty of remarkable universal value, and *Mixed Heritage* including aspects of both (that is, having both characters of Cultural Heritage and Natural Heritage).

Figure 1 presents the number of World Heritage Properties by region and type, current as of 2015. Figure 2 presents the history of annual inscriptions by region, from the first inscriptions in 1978 through 2015.<sup>2</sup> Answer the following Questions 1 to 3. For each question, use a separate answer sheet [indicating the question number clearly].

Question 1: Examine Figure 1, and describe the geographical distribution of World Heritage properties, and the tendencies in inscriptions you observe in across types. Use about 80 words in your answer.

Question 2: Examine Figure 2, and choosing two of the regions to compare, describe the trends and current situation up to the present. Use about 80 words in your answer.

Question 3: From Figures 1 and 2, what causes of the regional inequality in number of inscriptions can you think of? Considering both of the two viewpoints of (a) differences in land area and population among regions, and (b) the differences between Cultural Heritage and Natural Heritage, state your answer in about 125 words.

---

<sup>1</sup> Here *inscribed* means “selected and recorded.” The noun form is *inscription*.

<sup>2</sup> In both figures, *ARB = Arab States* means “Middle East and North Africa.”

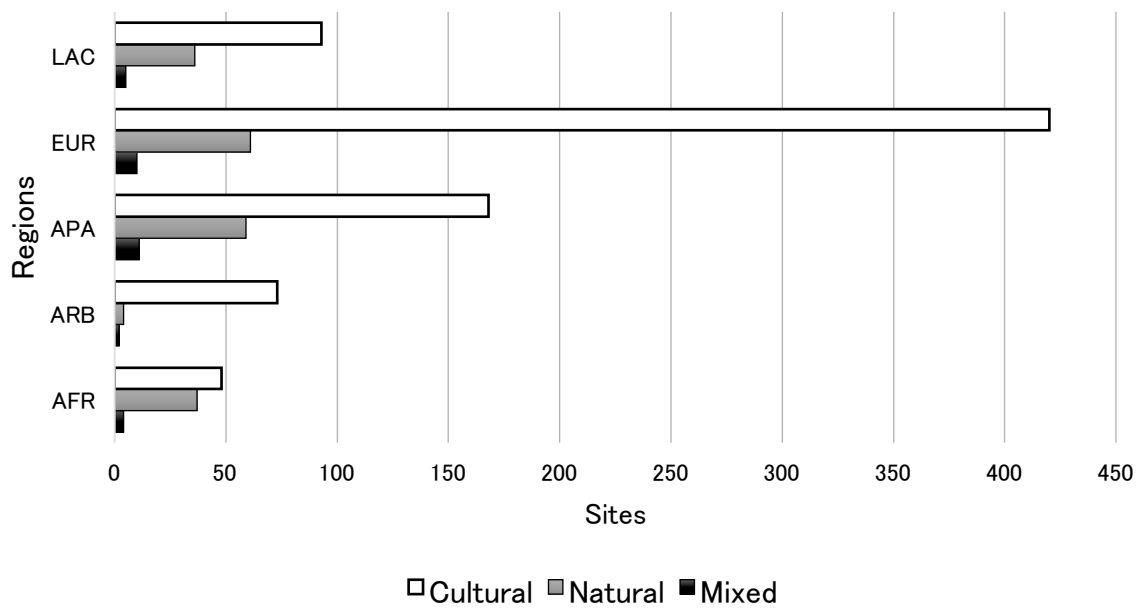


Figure 1 Number of World Heritage Properties by region  
 LAC=Latin America and the Caribbean EUR=Europe and North America  
 APA=Asia and the Pacific ARB=Arab States AFR=Africa  
 Source: <http://whc.unesco.org/en/list/stat/> (Retrieved: 2016/6/7)

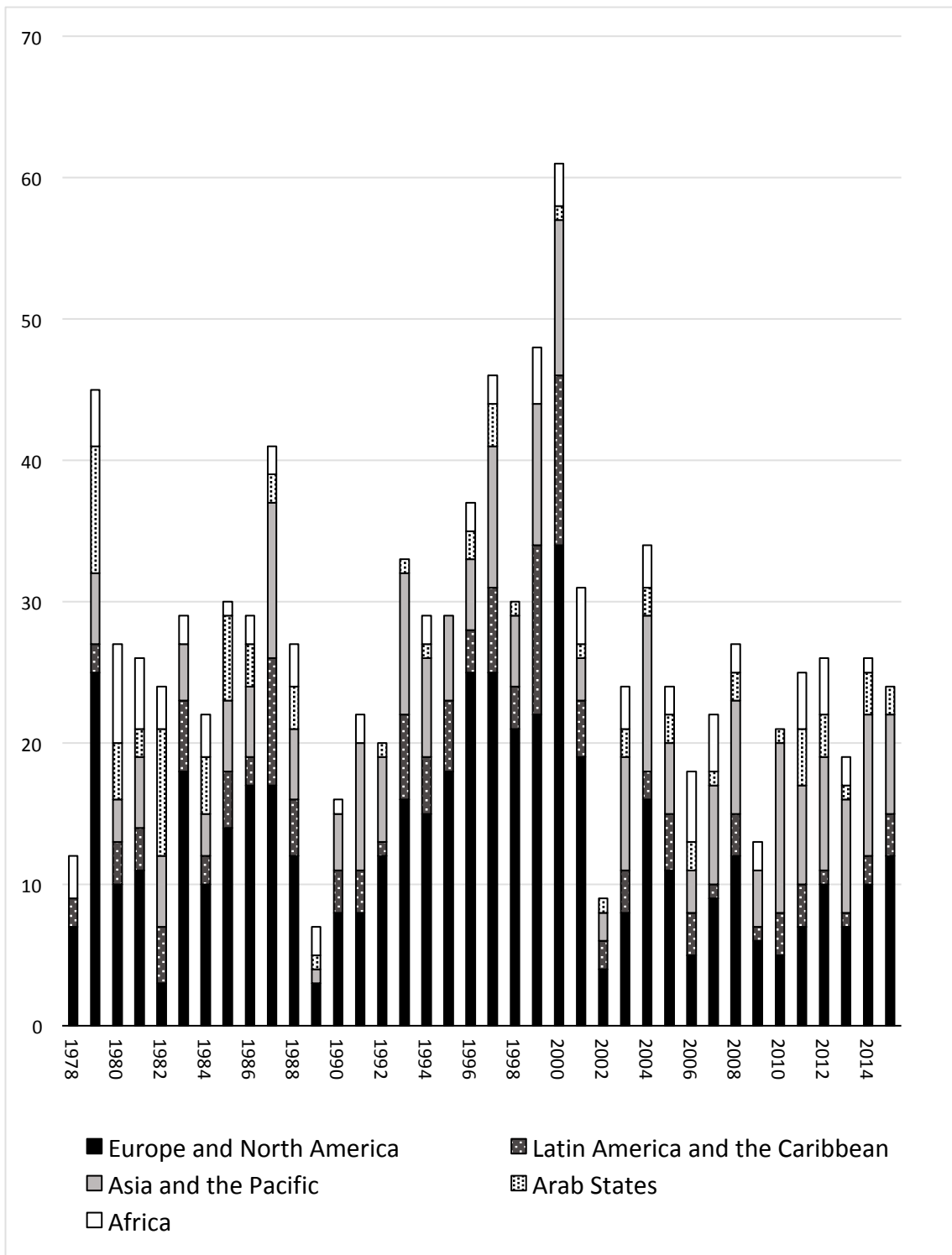


Figure 2 Number of World Heritage properties inscribed each year by region

LAC=Latin America and the Caribbean EUR=Europe and North America

APA=Asia and the Pacific ARB=Arab States AFR=Africa

Data source: <http://whc.unesco.org/en/list/stat/> (Retrieved: 2016/6/7)